

Directions to avodaq Berlin

avodaq AG

Gutenbergstr. 15

10587 Berlin

Google Maps: <https://goo.gl/maps/pUPaDJUHnhvgnV7GA>

Directions from Central station (approx. 15 minutes)

Take the S3 or S9 (S Spandau BHF), S5 (S Westkreuz) or S7 (S Potsdam Hauptbahnhof) and after four minutes exit at “Tiergarten”. From there on it will be a 10-minute walk: Take the exit and walk north on “Bachstr.” and cross the street. Turn right onto “Wegelystr.” and then turn left onto “Englische Str.”. Turn right again and you will be on “Gutenbergstr.”. You will now find the Berlin avodaq office on your left. You can use figure 1 and 2 for further orientation.



Fig. 1: Office building



Fig. 2: Englische Str.

Directions from the airport (BER) „Willy Brandt” (approx. 60 minutes)

Head to the train station “Flughafen BER – Terminal 1-2”. You will reach “Willy-Brandt-Platz” and then turn west towards “Margarete-von-Etzdorf-Str.” and go straight on until you reach the station. There you can take the regional train RB23 (to Potsdam, Golm Bhf.) and travel approximately 20 minutes to “Berlin Ostbahnhof”. Change there to the S5 (S Westkreuz), alternatively, you can also take the S3 and S7. After 15 minutes exit at “Tiergarten”. From there it will be a 10-minute walk, as described above. Alternatively, you can take the airport express FEX from BER Airport Terminal 1-2 in the direction of “S+U Berlin Hauptbahnhof”. Travel to “Ostkreuz” and change to the S7 (S Potsdam Hauptbahnhof) and head to “Tiergarten”.

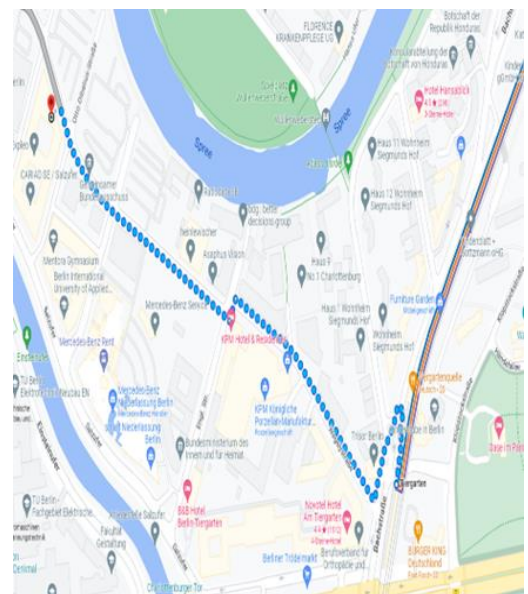


Fig. 3: The office is located at the red mark

Arrival by car

Please enter „Gutenbergstr. 15, 10587 Berlin“ into your navigation system. The avodaq parking garage is located on the corner of “Margarete-Kühn-Str.” and “Gutenbergstr.”. Please ring the bell in front of the gate (yellow box) and then you will receive a parking pass, that will allow you to enter. After entering the garage, keep to the right and you will get a parking spot assigned from us. After you have parked, follow the arrows towards the exit. You will see a staircase on the left side (fig. 6). The elevator is located at the red staircase B (fig. 7). You can use your parking pass to open the door. avodaq is located on the 5th floor.



Fig.4: Marg-Kühn-Str.

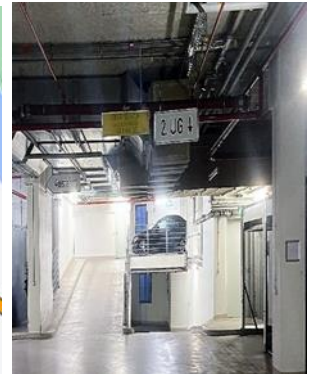


Fig. 5: parking garage



Fig. 6: Exit B



Fig. 7: Elevator