

Directions to avodaq Munich

avodaq AG

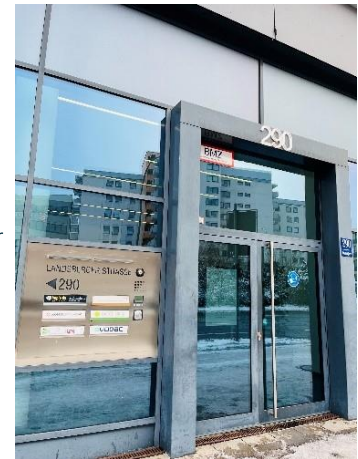
Landsberger Str. 290

80687 München

Google Maps: <https://goo.gl/maps/TdLDb8mYwhLXkSyX6>

Directions from central station (approx. 15 minutes)

Take one of the following lines S1, S2, S3, S4 or S6, heading out of city center in the direction of "Pasing" and get off at "Laim" station. From there it will be a four-minute walk (350m) to the office. Walk north on "Wotanstr.", cross the street and turn left. The Munich avodaq office is now on the left-hand side. See figure 1 for more orientation.



Directions from the airport (approx. 45 minutes)

Take the S1 in the direction of "Leuchtenbergring". It's going to be a thirty-five-minute drive, until you exit at "Laim" station. From there, the route is as described above.

Arrival by car

If you are planning on traveling by car, please let us know beforehand so we will reserve a parking space for you.

Enter the address "Landsbergerstr. 290, 80687 München" into your navigation system. From "Landsbergerstr." you can then turn into our basement parking. Before entering the garage, you will need to dial avodaq at the gate. Our reception will then open the gate for you. Our parking spaces are located on the third floor and designated by signs. (You may need to make a U-turn to enter the garage). See figure 2, 3 and 4 for more assistance.

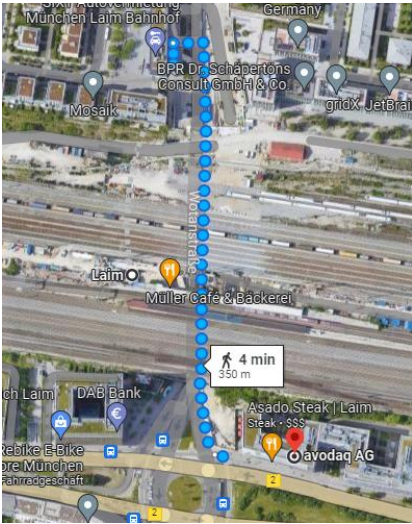


Figure 1: Walk from „Laim“ station to avodaq office (approx. 350m)

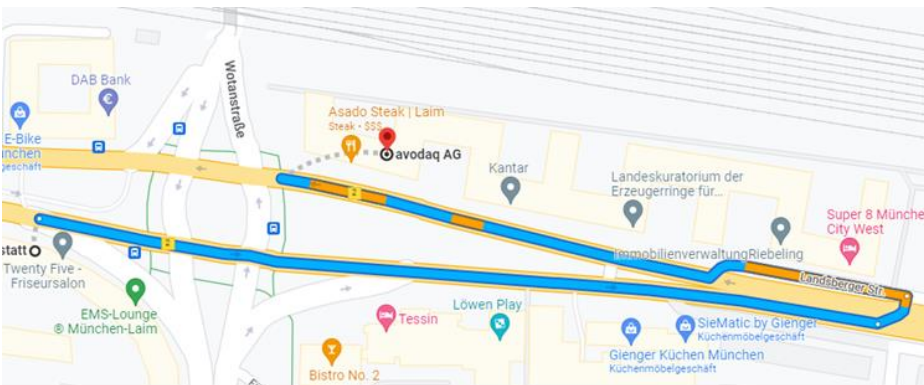


Figure 2: Directions by car

Figure 3: Entry to our Basement garage

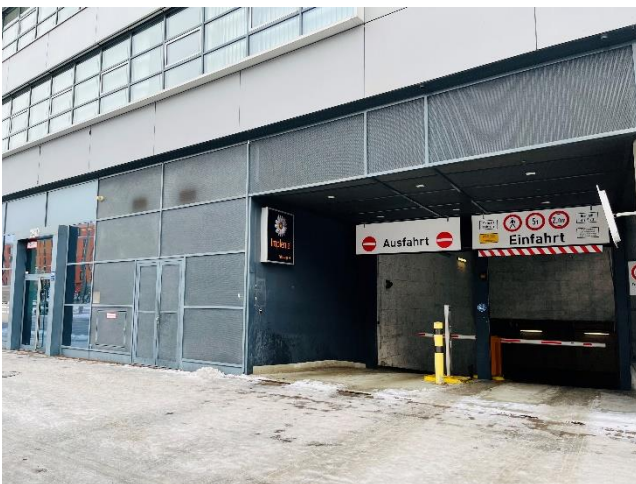


Figure 4: avodaq parking lots

